

JETSTREAM[®] SWITCH & GO - INDUSTRIAL KIT

PRODUCT CODE: C_P030- 01-300

POWERED AIR FILTERING FACESHIELD WITH A BELT MOUNTED RECHARGEABLE BLOWER AND PSL OR A2PSL FILTER

TECHNICAL
SPECIFICATION

RESPIRATORY PROTECTION

INSTRUCTIONS FOR USE

Line up all fins on the filter with the corresponding holes in the blower unit and push in. Rotate anti-clockwise until all fins click to the closed position

The airflow of the blower unit should be checked prior to use

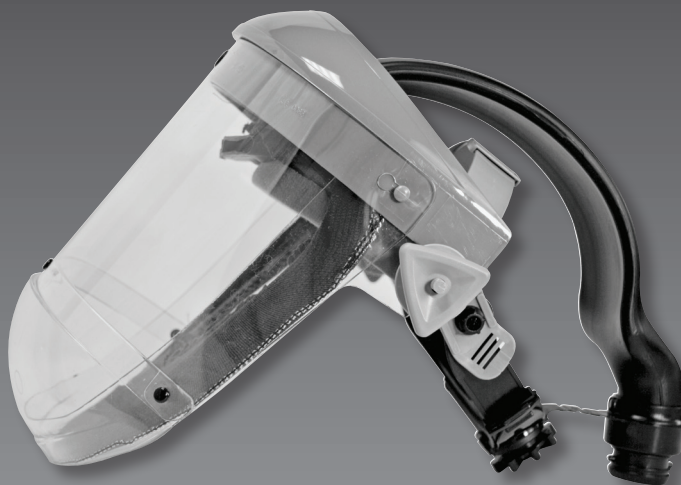
Fit visor on head and fasten harness to ensure correct fit

Ensure the visor skirt is pulled down around the head and under the chin to allow the elasticated seal to fit properly

The hose fits onto the blower unit using a bayonet fitting

To re-charge battery, insert charger into the jack on the rear of the unit. Leave to charge for 16 hours. Remove charger after this time

Care must be taken to ensure that the correct respiratory protection device is selected for the work to be carried out. If in doubt seek professional advice



PLUG TYPE:
European and
Multiregional
plugs available

PERFORMANCE

Waist Mounted Unit: Blower unit with fully automatic alarm and integrated battery providing 180 L/min of filtered air

Headpiece: grinding visor offers protection against medium energy high speed particles at 120m/s (270mph), liquid droplets and molten metal. The optical qualities of the visor comply with the requirements of optical class 1 (highest)

Supply Hose: Reinforced supply hose to prevent kinking

CLEANING & MAINTENANCE

Wipe with damp cloth soaked in mild detergent solution, being careful not to get liquid in the filter

Do not immerse the unit in water. Do not use abrasive substances or solvents

Cleaning the filter does not extend its life

Store the unit in an airtight container, out of direct sunlight away from chemicals, abrasive substances and in a dry atmosphere

CONFORMITY

Respiratory protection provided by the unit complies with European Standard EN 12941

EC Certificate Number 59716, issued by BSI Product Certification

Grinding visor meets the requirements of EN166

JETSTREAM[®] SWITCH & GO - INDUSTRIAL KIT

PRODUCT CODE: C_P030-_01-300

POWERED AIR FILTERING FACESHIELD WITH A BELT MOUNTED RECHARGEABLE BLOWER UNIT AND PSL OR A2PSL FILTER

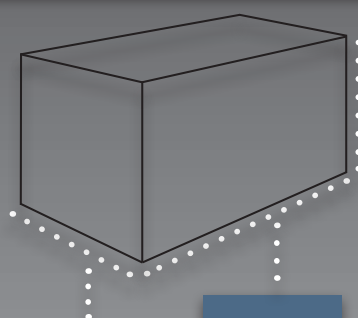
TECHNICAL SPECIFICATION

RESPIRATORY PROTECTION

DIMENSIONS OF OUTER PACKAGING

Quantity: 1

Weight: 3.98kg (Approx.)



HEIGHT:
369mm

WIDTH:
398mm

LENGTH:
398mm

AIRFED VISOR SIZE

Head Size: 530 – 640mm (6½ – 7¾)

LIMITATIONS OF USE

Protection will only be offered if the Jetstream[®] unit is fitted correctly

The headband, when in contact with the skin may cause allergic reactions to susceptible individuals. If this occurs leave the hazard area, remove the mask and seek medical advice

Check airflow of the blower unit before use. The blower unit should operate without the low flow/battery warning buzzer sounding

If warning buzzer sounds, re-charge the battery and replace the filter (where required)

The blower units for Dust and Gas/vapour are not interchangeable, Force fitting of filters will damage the unit

The use by date of the filter is printed on the outside

The working life of the filter depends on many factors including work rate, airflow and concentration of any contaminant in the atmosphere. The filter should be changed immediately if,

- Breathing difficulties due to clogging are experienced,
- Breakthrough of a contaminant is detected, or
- The filter becomes damaged

Use in well ventilated areas only, which are not deficient in oxygen and do not contain explosive atmospheres

To obtain maximum workable life from the unit, allow the battery to run down fully before recharging



FILTER PSL PERFORMANCE

Offers an assigned protection factor (APF) of 20 x Workplace Exposure Limit (WEL) for very fine dusts, fibres, fumes and aqueous mists



FILTER A2 PSL PERFORMANCE

Offers an assigned protection factor (APF) of 20 x Workplace Exposure Limit (WEL) for organic vapours and gases, very fine dusts, fibres, fumes and aqueous mists

BATTERY LIFE

Use time: 8 hours

Charge time: 16 hours

MATERIALS

Outer Casing: ABS

Impellor: ABS

Circuit: Electronics Battery: Nickel Metal Hydride (NiMh)

Filter Outer: ABS

Filter Media: Man made

Filter Mesh: Polythene

Harness: Polythene c/w ABS, Nylon & Steel Fittings

Browguard: Polypropylene

Visor: Polycarbonate

Hose: Reinforced PU

Belt & Fittings: Nylon

